

307

SPRING STREET

SOHO, NYC

Between Greenwich & Hudson Streets



APPROXIMATE SIZE
Ground Floor: 2,500 SF
Lower Level: 1,500 SF

ASKING RENT
\$30,000/Month

POSSESSION
Immediate

TERM
10-15 Years

FRONTAGE
25 FT

COMMENTS

- Full turn-key
- Vented kitchen
- Skylights in place to provide natural light
- Walk-in boxes
- No key money

NEIGHBORS

Bar Hugo • Paul's Casablanca • Lazy Point • Houseman • Dogpound • Solidcore Nonna Beppa • Local & Vine • Arlo SoHo

TRANSPORTATION



PROPERTY INFORMATION

JAMES FAMULARO

President
646.658.7373
jfamularo@meridiancapital.com



All information supplied is from sources deemed reliable and is furnished subject to errors, omissions, modifications, removal of the listing from sale or lease, and to any listing conditions, including the rates and manner of payment of commissions for particular offerings imposed by Meridian Capital Group. This information may include estimates and projections prepared by Meridian Capital Group with respect to future events, and these future events may or may not actually occur. Such estimates and projections reflect various assumptions concerning anticipated results. While Meridian Capital Group believes these assumptions are reasonable, there can be no assurance that any of these estimates and projections will be correct. Therefore, actual results may vary materially from these estimates and projections. Any square footage dimensions set forth are approximate.

307 SPRING STREET

SOHO, NYC | Between Greenwich and Hudson Streets

RESTAURANT FOR LEASE



INTERIOR

JAMES FAMULARO

President
646.658.7373
jfamularo@meridiantcapital.com

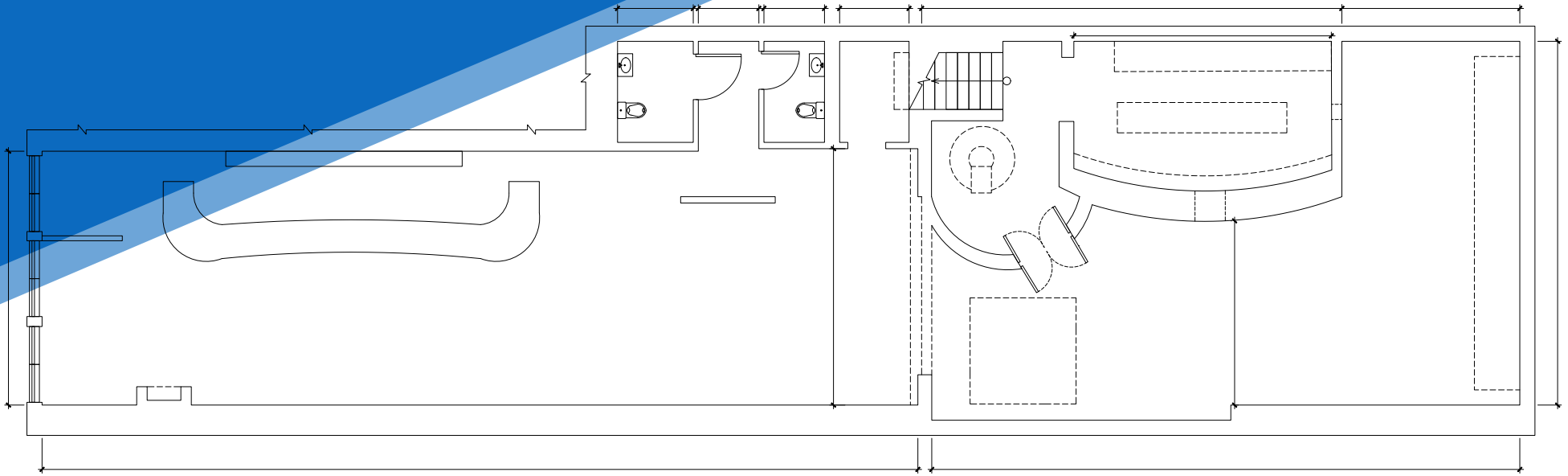


All information supplied is from sources deemed reliable and is furnished subject to errors, omissions, modifications, removal of the listing from sale or lease, and to any listing conditions, including the rates and manner of payment of commissions for particular offerings imposed by Meridian Capital Group. This information may include estimates and projections prepared by Meridian Capital Group with respect to future events, and these future events may or may not actually occur. Such estimates and projections reflect various assumptions concerning anticipated results. While Meridian Capital Group believes these assumptions are reasonable, there can be no assurance that any of these estimates and projections will be correct. Therefore, actual results may vary materially from these estimates and projections. Any square footage dimensions set forth are approximate.

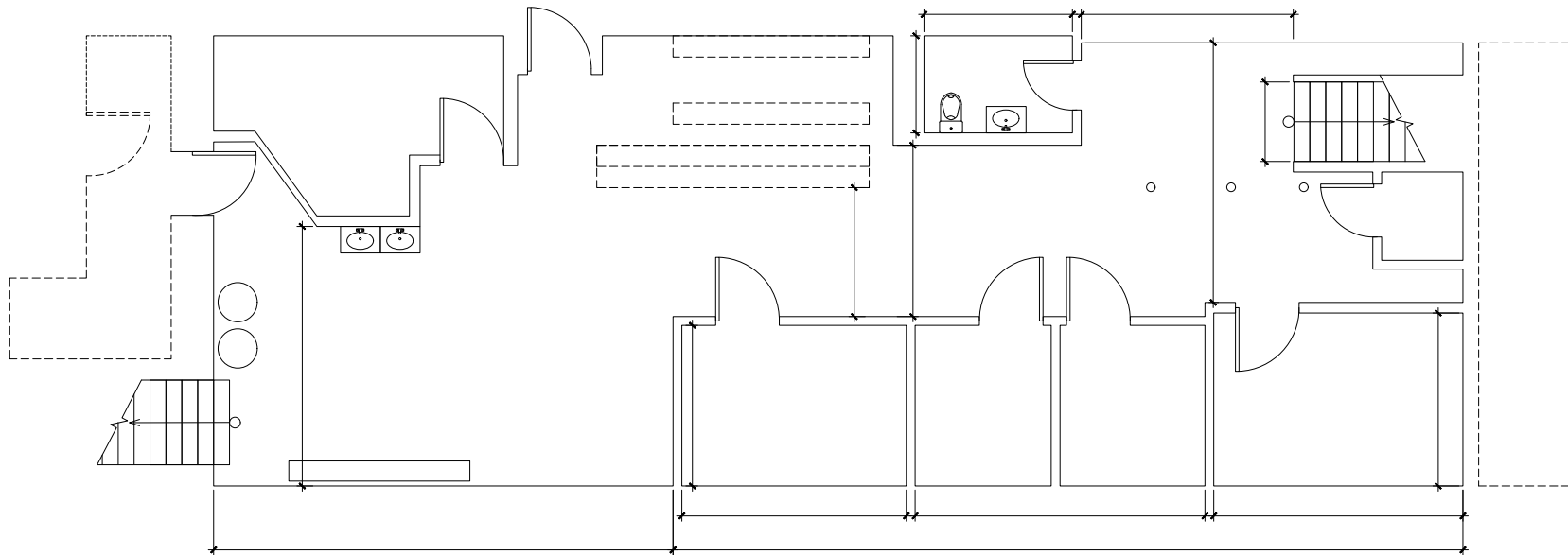
307 SPRING STREET

SOHO, NYC | Between Greenwich and Hudson Streets

RESTAURANT FOR LEASE



GROUND FLOOR



LOWER LEVEL

FLOOR PLAN

JAMES FAMULARO

President
646.658.7373
jfamularo@meridiancapital.com

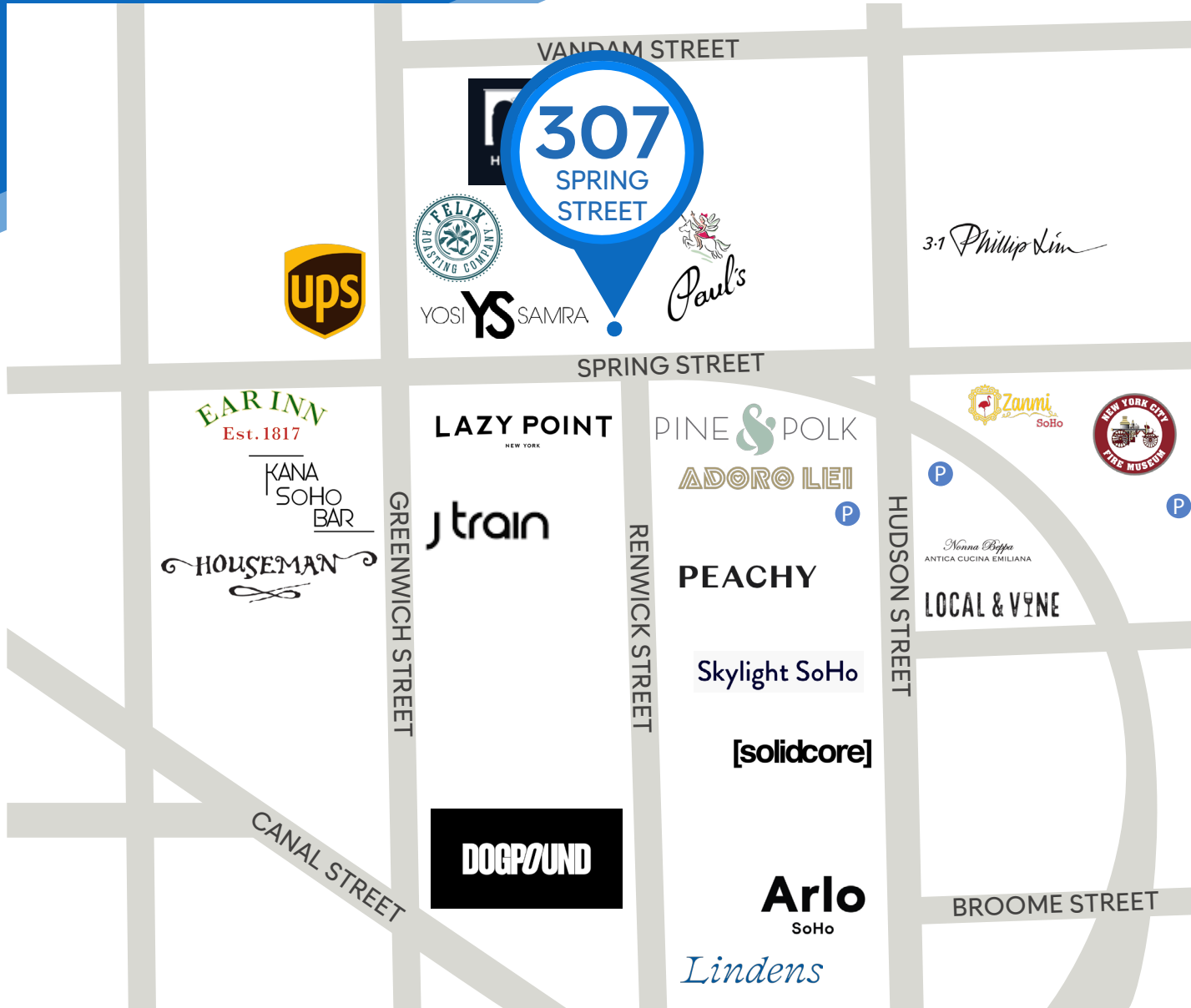


All information supplied is from sources deemed reliable and is furnished subject to errors, omissions, modifications, removal of the listing from sale or lease, and to any listing conditions, including the rates and manner of payment of commissions for particular offerings imposed by Meridian Capital Group. This information may include estimates and projections prepared by Meridian Capital Group with respect to future events, and these future events may or may not actually occur. Such estimates and projections reflect various assumptions concerning anticipated results. While Meridian Capital Group believes these assumptions are reasonable, there can be no assurance that any of these estimates and projections will be correct. Therefore, actual results may vary materially from these estimates and projections. Any square footage dimensions set forth are approximate.

307 SPRING STREET

SOHO, NYC | Between Greenwich and Hudson Streets

RESTAURANT FOR LEASE



NEIGHBORS

JAMES FAMULARO

President
646.658.7373
jfamularo@meridiancapital.com



All information supplied is from sources deemed reliable and is furnished subject to errors, omissions, modifications, removal of the listing from sale or lease, and to any listing conditions, including the rates and manner of payment of commissions for particular offerings imposed by Meridian Capital Group. This information may include estimates and projections prepared by Meridian Capital Group with respect to future events, and these future events may or may not actually occur. Such estimates and projections reflect various assumptions concerning anticipated results. While Meridian Capital Group believes these assumptions are reasonable, there can be no assurance that any of these estimates and projections will be correct. Therefore, actual results may vary materially from these estimates and projections. Any square footage dimensions set forth are approximate.